

Audo



UPHOLSTERY

JUNE 2025, EU

AUDO UPHOLSTERY PROGRAMME
Textile

The Audio Upholstery Program is an overview of the textile and leathers available for Audio upholstered furniture. All textile and leather options are available in all colors. You'll find over 100 fabric and leather options, with the most popular configurations available with expedited delivery in our Quick Ship program. Custom upholstery orders from our Audio Upholstery Program (SPEC) are ready to ship with standard delivery lead times. Our Fixed Combinations listed in this Brand Book are suggested upholsteries selected by our design team, and deliver with standard lead times.

We are happy to upholster furniture using customer's own materials (COM) with extended delivery lead times, upon fabric approval. COM products are to be calculated by PC1T if in textile and PC1L if in leather, excluding the price of the fabric.

Please note that the color references in this upholstery programme are only intended as a guide. For further information please see manufacturer websites, or contact your local Audio Sales Representative for samples or further information.

KVADRAT.DK
SAHCO.COM
NEVOTEX.COM
JAB.DE
YARNCOLLECTIVE.CO.UK
DANISHARTWEAVING.COM
DESIGNERSGUILD.COM
DEDAR.COM



TEXTILE UPHOLSTERY SELECTION & FURNITURE

- TESTED AND APPROVED.
- NOT TESTED, BUT PRE-APPROVED BY SUPPLIER

Use table to determine the upholstery options available
for fabric-covered items.

	AFTERROOM	BRASILIA	CAIRN	CO CHAIR	EAVE COLLECTION	EAVE SEAMLINE	HARBOUR CHAIR	HARBOUR LOUNGE CHAIR	INGEBORG	KNITTING CHAIR	MERKUR	MINGLE	MY OWN CHAIR	OFFSET	PASSAGE	READY	TEAROOM CLUB, SIDE & LOUNGE CHAIR W/SWIVEL	TEAROOM LOUNGE CHAIR	TEAROOM SOFA	THE TIRED MAN	VILHELM	THE PENGUIN	ELIZABETH	ODA	PAGODE	RADIOHUS	THE SEAL
PRICE CATEGORY 0																											
AUDO BOUCLÉ, AUDIO	●	●	●	●	●	●	●	●	●	●	●	○	○	●	○	●	●	●	●	●	○	○	○		○	○	○
AUTUMN, KVADRAT	●	●	●	●	●	●	●	●	●	●	●	●		●	●	●	●	●	●			●	●	●			●
PRICE CATEGORY 1																											
BARNUM BOUCLÉ, AUDIO	●	●	●	●	●	●	●	○	○	○	●	○	○	●	○	●	●	●	●	●	○	○	○		○	○	○
CHAMPION, JAB	●	●	●	●	●	●	●		○	●	○	○	○	●	○	○	●	●	●	○	○	○	○		○	○	○
HOT MADISON, JAB	●	●	●	●	●	●	●	●	●		○	○	○	●	○	○	●	●	●	○	○	○	○		○	○	○
ILLUSION, NEVOTEX	●	○	●	●	●	●	●		○	●	○	○	○	●	○	○	○	○	○	○	○	○	○			○	○
LOGAN, YARN COLLECTIVE	●	●	●	●	●	●	●	●	●	●	●	●	●	●	●	●	●	●	●	●	●	●	●	●	●	●	●
MAPLE, KVADRAT	●	●	●	●	●	●	●		○	●	○	○	○	●	○	○	●	●	●	○	○						
REMIX, KVADRAT	●	●	●	●	●	●	●	●	○	●	○	○	●	●	○	●	●	●	●	○	○	●	●		●	●	●
RE-WOOL, KVADRAT	●	○	●	●	●	●	●	●	○	○	○	○	○	●	○	●	●	●	●	○	○	●	●		●	●	●
PRICE CATEGORY 2																											
AVALON, KVADRAT	●	●	●	●	●					●	●			●	●		●	●	●								
CANVAS 2, KVADRAT	●	●	●	●	●	●	●	●	○	●	○	○	○	●	○	●	●	●	●	○	○	○	○		○	○	○
CLAY, SAHCO, KVADRAT	●	●	○	●	●	●	●	○	○	○	○	○	○	●	○	○	●	●	●	○	○	○	○		○	○	○
FIORD, KVADRAT	●	●	●	●	●	●	●	●	●	●	○	○	●	●	○	●	●	●	●	○	●	●	●		●	●	●
HALLINGDAL 65, KVADRAT	●	●	●	●	●	●	●	●	●	●	●	●	●	●	○	●	●	●	●	●	●	●	●	●	●	●	●
KEIGA, KVADRAT	●	●	●	●	●	●	●	●	●	●	●	●		●	●	●	●	●	●	●		●	●	●	●	●	●
MOSS, SAHCO, KVADRAT	●	●	●	●	●	●	●	●	○	●	○	○	○	●	○	●	●	●	●	●	●	●	●	○	○	○	○
OAXACA, KVADRAT	●	●	●	●	●	●	●			●	●			●	●	●	●	●	●			●	●				●
REFLECT, KVADRAT	●	○	○	●	●	●	●		○	○	○	○	○	○	○	○	○	○	○	○	○	○	○		○	○	○
SAVANNA, KVADRAT	●	●	●	●	●	●	●	●	○	●	○	○	○	●	○	●	●	●	●	○	○	○	○	○	○	○	○
STEELCUT TRIO 3, KVADRAT	●	○	●	●	●	●	●	●	○	●	○	○	○	●	○	○	●	●	●	○	○	●	●		○	○	●
PRICE CATEGORY 3																											
ARCTIC, JAB	○	●	○	○	●	●	●	○	○	○	○	○	○	○	○	○	●	●	○	○	○	○	○	○	○	○	○
BARU, SAHCO, KVADRAT	●	●	●	●	●	●	●	●	●	●	●	●	●	●	●	●	●	●	●	●	●	●	●	●	●	●	●
CIFRADO, KVADRAT	●	●	●	●	●	●	●	●	●	●	●	●	●	●	●	●	●	●	●	●	●	●	●	●	●	●	●
SAFIRE, SAHCO, KVADRAT	●	●	●	●	●	●	●	●	○	●	○	○	●	●	○	○	●	●	●	○	○	●	○	○	●	●	○
SERPENTINE, KVADRAT	●	●	●	●	●	●	●	●	●	●	●	●	●	●	●	●	●	●	●	●	●	●	●	●	●	●	●
VIDAR 4, KVADRAT	●	●	●	●	●	●	●	●	○	○	○	○	●	●	○	○	●	●	●	○	○	●	○	○	○	○	○
ZERO, SAHCO, KVADRAT	○	●	●	●	●	●	●	○	●	○	○	●	●	●	○	●	○	○	●	●	●	○	○	○	○	○	○
PRICE CATEGORY 4																											
CABANON SOFT, DESIGNERS GUILD	○	○		○			○	○		○	○				○		●										
GRAND MOHAIR, DANISH ART WEAVING	○	○	●	●			○	●	●	○	○	●	○		○	○	○	○	●	○	●	○	○		○	○	○
LUPO, DEDAR	●	○	○	●	●	●	●	○	○	○	○	○	○	●	○	○	●	●	○	○	○	○	○	○	○	○	○

Textile Category 0

AUDO BOUCLÉ
by Audo



With its distinctive appearance, Audo Bouclé is characterised by its looped yarns that create a textured, three-dimensional surface.

Soft, warm and durable, it is available in a range of beautiful muted colours.

PRICE CATEGORY
0

MATERIALS
78% Acrylic,
20% Polyester
2% Viscose

DURABILITY
60.000 Martindale

LIGHTFASTNESS
5-6 (ISO 1-8)

PILLING
4-5 (ISO 1-5)

C&M (BS5852-0/1)
No

CAL 117
Yes

CRIB 5 (BS5852-5)
No



02



06



08



07



10



15



16



20



21

AUTUMN
by Kvadrat

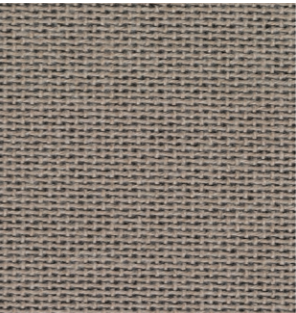


Combining sustainability with elegance, Autumn is spun from recycled polyester, woven in a layered double-beam weave. It has a soft, natural feel and a dark, unicoloured background contrasted with a melange top layer of mixed fibre-dyed colours.

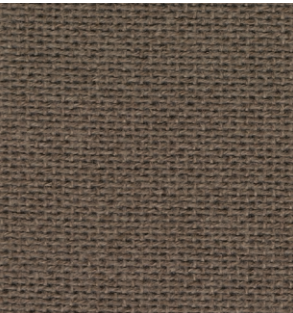
PRICE CATEGORY
0
MATERIALS
100% recycled polyester
MARTINDALE
50.000
LIGHTFASTNESS
7
PILLING
4



0221



0331



0361

Textile Category 1

BARNUM BOUCLE
by Audo



Woven from a cotton-wool blend, Barnum Bouclé is crafted with twisted, looped yarns for a durable, nubby surface finish that enhances the softness and comfort of the fabric.

Available in a range of beautiful muted colours.

PRICE CATEGORY
1

MANUFACTURER
Audo

MATERIALS
45% Cotton
19% Viscose
15% Wool
13% PC
8% Polyester

DURABILITY
60.000 Martindale

LIGHTFASTNESS
5 (ISO 1-8)

PILLING
4 (ISO 1-5)

C&M (BS5852-0/1)
Yes

CAL 117
Yes

CRIB 5 (BS5852-5)
No - Cannot be treated



04



05



07



10



11



13



19



21



24



The solid-hued upholstery fabric impresses with its adaptability, durability and luxurious texture. In a palette of beautiful colours, the sophisticated velvet upholstery fabric provides myriad opportunities for enhancing furniture and interiors.

PRICE CATEGORY
1
MANUFACTURER
JAB
MATERIALS
100% Polyester
DURABILITY
70.000 Martindale
LIGHTFASTNESS
5 (ISO 1-8)
PILLING
3 (ISO 1-5)
C&M (BS5852-0/1)
Yes
CAL 117
Yes
CRIB 5 (BS5852-5)
Yes



1-3114-022



1-3114-035



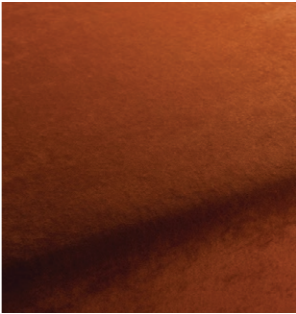
1-3114-041



1-3114-042



1-3114-054



1-3114-061



1-3114-070



1-3114-073

ILLUSION
by Nevotex



A synthetic leather crafted from Polyurethane (PU), Illusion is a versatile choice for a range of applications, particularly well-suited for use in hospitality settings and other high-traffic environments with elevated hygiene requirements thanks to its easy-clean surface.

PRICE CATEGORY	1
MANUFACTURER	Nevotex
MATERIALS	100% Polyester
THICKNESS	1 mm
DURABILITY	500.000 Martindale
LIGHTFASTNESS	>7 (ISO 1-8)
PILLING	4-5 (ISO 1-5)
C&M (BS5852-0/1)	Yes
CAL 117	Yes
CRIB 5 (BS5852-5)	Yes

00110	44388	47124	85020
85352			

HOT MADISON REBOOT
by JAB



The subtly elevated surface of Hot Madison Reboot gives the cotton-linen blend a laid-back charm and an exceptionally pleasant texture. Low-maintenance and durable, its all-encompassing utility allows it to effortlessly fit into multiple applications and interior styles where elegant neutrals and muted mid-tones take centre stage.

PRICE CATEGORY
1
MANUFACTURER
JAB
MATERIALS
63% Cotton
37% Linen
DURABILITY
55.000 Martindale
LIGHTFASTNESS
4-5 (ISO 1-8)
PILLING
4-5 (ISO 1-5)
C&M (BS5852-0/1)
No
CAL 117
No
CRIB 5 (BS5852-5)
No

CH1249-056	CH1249-070	CH1249-089	CH1249-095
CH1249-233	CH1249-495	CH1249-503	CH1249-550
CH1249-572	CH1249-713	CH1249-718	

LOGAN
by Yarn Collective



A modern interpretation of traditional wool bouclé, Logan is spun from a recycled cotton-wool blend for a super soft feel and structured look. Its subtle texture features the distinctive unevenness and character of classic bouclé.

PRICE CATEGORY
1
MATERIALS
66% Recycled Cotton
15% Wool
15% Acrylic
4% Polyester
MARTINDALE
45.000
LIGHTFASTNESS
4-5
PILLING
5



YC04064-01



YC04064-02



YC04064-03

MAPLE
by Kvadrat



Crafted with aero finishing for an exceptionally soft feel, Maple features three tonal chenille yarns and a plush pile that reveals the intricacies of its weave and a casually irregular expression. Viscose lends a unique shimmer, intensifying with changes in light and perspective.

PRICE CATEGORY	1
MANUFACTURER	Kvadrat
MATERIALS	63% Cotton 37% Linen
DURABILITY	55.000 Martindale
LIGHTFASTNESS	4-5 (ISO 1-8)
PILLING	4-5 (ISO 1-5)
C&M (BS5852-0/1)	No
CAL 117	No
CRIB 5 (BS5852-5)	No

			
0112	0162	0222	0352
			
0392	0722	0742	

REMIX 3
by Kvadrat



Remix embodies simplicity, elegance and minimalism from a distance, while revealing complexity, nuance and vibrancy up close. This duality is accomplished by intricately weaving two contrasting yarns, each carrying up to three distinct hues.

Its remarkable depth of colour seamlessly transitions into a uniform shade when viewed from a distance.

PRICE CATEGORY
1
MANUFACTURER
Kvadrat
MATERIALS
90% New Wool (Worsted)
10% Nylon
DURABILITY
100.000 Martindale
LIGHTFASTNESS
6 (ISO 1-8)
PILLING
4 (ISO 1-5)
C&M (BS5852-0/1)
Yes
CAL 117
Yes
CRIB 5 (BS5852-5)
No - Can be treated

0123	0133	0143	0163
0223	0233	0433	0733
0852	0873	0954	

RE-WOOL
by Kvadrat



Re-wool is a luxurious upholstery fabric that champions sustainability. Made with recycled wool, it features a woven stitch-like surface with a remarkable colour depth that creates a dynamic visual interplay on furniture surfaces.

PRICE CATEGORY
1
MANUFACTURER
Kvadrat
MATERIALS
45% Recycled Wool Worsted)
45% New Wool (Worsted)
10% Nylon
DURABILITY
100.000 Martindale
LIGHTFASTNESS
6 (ISO 1-8)
PILLING
4 (ISO 1-5)
C&M (BS5852-0/1)
Yes
CAL 117
Yes
CRIB 5 (BS5852-5)
No - Can be treated

0128	0198	0218	0378
0448	0558	0718	0768

Textile Category 2

AVALON
By Kvadrat



This piece-dyed velvet maintains its distinctive glossy surface while also boasting flame-retardant properties. Its luxurious appearance, soft texture and durability make it a timeless choice for furniture upholstery, imparting a rich sheen and plush feel.

PRICE CATEGORY
2

MATERIALS
100% Trevira CS

MARTINDALE
100.000

LIGHTFASTNESS
5-6

PILLING
4-5



0006



0050



0021



0053



0012



0023



A structured and durable worsted wool upholstery fabric ideal for expansive surfaces, Canvas 2 features a subtle weave comprised of three melange yarns for colour richness and texture. While appearing as a serene, unicoloured textile from a distance, upon closer inspection it reveals six colour nuances.

PRICE CATEGORY
2
MANUFACTURER
Kvadrat
MATERIALS
90% New Wool (Worsted)
10% Nylon
DURABILITY
100.000 Martindale
LIGHTFASTNESS
5-6 (ISO 1-8)
PILLING
4 (ISO 1-5)
C&M (BS5852-0/1)
Yes
CAL 117
Yes
CRIB 5 (BS5852-5)
No - Can be treated

CANVAS 2
by Kvadrat

114	124	134	154
174	216	244	254
356	454	576	794
996			

CLAY
by Sahco



Clay is the result of skilfully interwoven warp and weft yarns. The cotton-linen blend upholstery fabric has a uniquely textured surface that exudes casual elegance. Enhanced with a supportive backing, Clay is an excellent choice for upholstering furniture.

PRICE CATEGORY
2

MANUFACTURER
Sahco

MATERIALS
76% Linen
21% Cotton
3% Polyester

DURABILITY
45.000 Martindale

LIGHTFASTNESS
5-6 (ISO 1-8)

PILLING
4 (ISO 1-5)

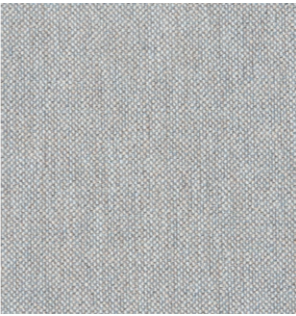
C&M (BS5852-0/1)
Yes

CAL 117
No

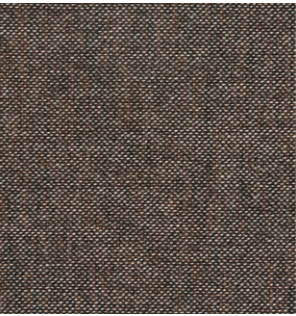
CRIB 5 (BS5852-5)
No - Can be treated



0002



0003



0004



0005



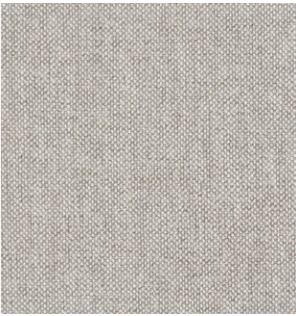
0008



0010



0011



0012



0015



0016



0017

FIORD 2
by *Kvadrat*



A versatile upholstery fabric with a three-dimensional appearance, Fiord 2 cleverly merges a *mélange* yarn with a unicoloured yarn. Inspired by the moonlight casting a pearlescent glow on the rippling waters of a Norwegian fjord, its refined expression results in pearl-like dots that dance across the fabric's surface.

PRICE CATEGORY
2
MANUFACTURER
Kvadrat
MATERIALS
92% New Wool (Worsted)
8% Nylon
DURABILITY
60.000 Martindale
LIGHTFASTNESS
6 (ISO 1-8)
PILLING
4-5 (ISO 1-5)
C&M (BS5852-0/1)
Yes
CAL 117
Yes
CRIB 5 (BS5852-5)
No - Can be treated

121	191	271	322
371	451	521	591
751	782	951	961

HALLINGDAL 65
by Kvadrat



Originally designed by Nanna Ditzel in 1965, Hallingdal 65 is an exceptionally durable upholstery fabric that features a harmonious blend of wool and viscose, both dyed before spinning to accentuate their texture. The wool contributes superior durability and flexibility, while the viscose enhances the colour with brilliance and depth.

PRICE CATEGORY
2
MANUFACTURER
Kvadrat
MATERIALS
70% New Wool
30% Viscose
DURABILITY
100.000 Martindale
LIGHTFASTNESS
7 (ISO 1-8)
PILLING
3-4 (ISO 1-5)
C&M (BS5852-0/1)
Yes
CAL 117
Yes
CRIB 5 (BS5852-5)
Yes

0110	0130	0166	0180
0200	0220	0224	0227
0270	0350	0600	0694

KEIGA
By Kvadrat



With its matte wool base and contrasting shiny yarns, Keiga adds depth to any design with its softly rippled surface, reminiscent of natural landscapes.

PRICE CATEGORY
2

MATERIALS
38% New Wool
37% Viscose
16% Linen
9% Nylon

MARTINDALE
50.000

LIGHTFASTNESS
6

PILLING
3-4



0112



0232



0362

MOSS
by Sahco

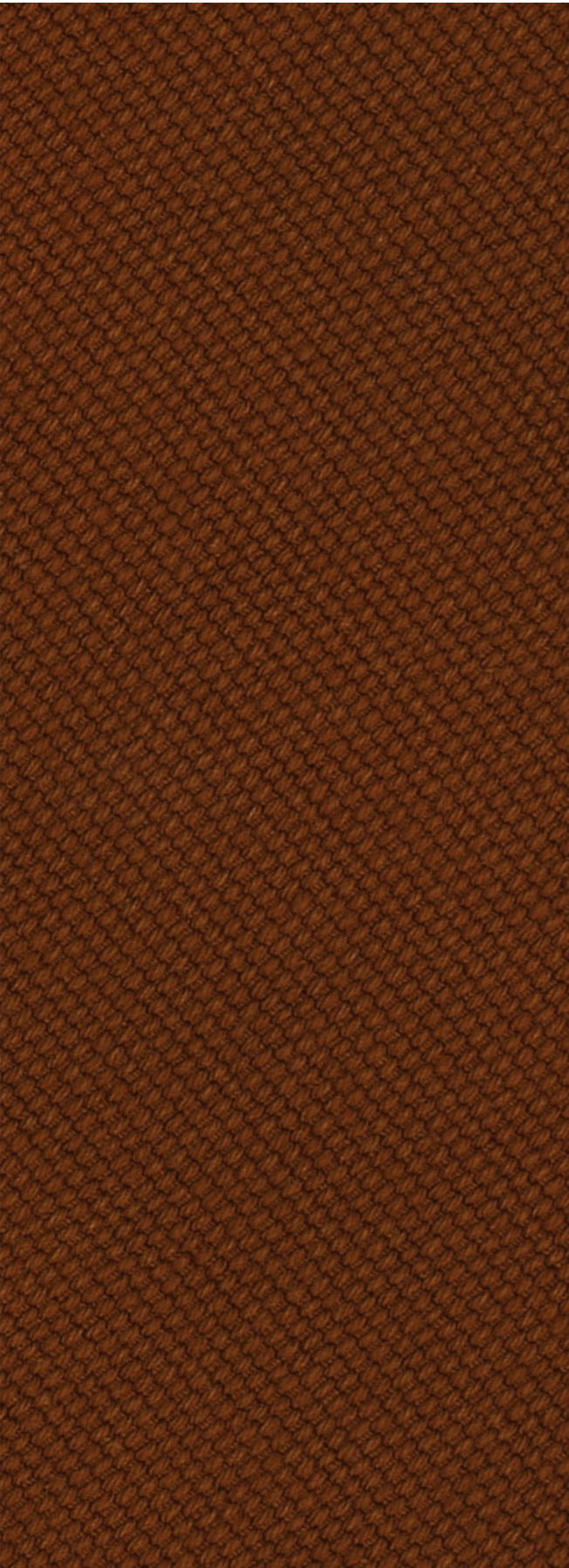


Moss stands out with its textured surface, a combination of twisted yarn and chenille that not only imparts a sense of movement to the fabric, but also provides a soft handle, adding a distinctive dimension to upholstered furniture. Colour options include both one- and two-tone combinations.

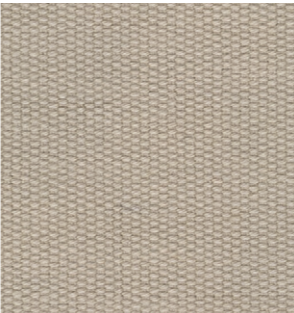
PRICE CATEGORY
2
MANUFACTURER
Kvadrat
MATERIALS
52% Cotton
22% Viscose
14% Polyacrylic
6% Linen
3% Polyester
3% Nylon
DURABILITY
50.000 Martindale
LIGHTFASTNESS
5-7 (ISO 1-8)
PILLING
4-5 (ISO 1-5)
C&M (BS5852-0/1)
Yes
CAL 117
Yes
CRIB 5 (BS5852-5)
No - Can be treated

0001	0002	0004	0005
0006	0008	0010	0011
0012	0013	0016	0018
0019	0022		

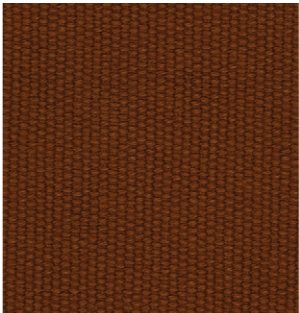
OAXACA
By Kvadrat



A thick, solid-coloured canvas reminiscent of durable workwear, this plain weave cotton is dyed as a single piece and draws inspiration from the vibrant, naturally pigmented architecture of Oaxaca, Mexico.



210



560

PRICE CATEGORY
2

MATERIALS
100% cotton

MARTINDALE
45.000

LIGHTFASTNESS
4-5

PILLING
4

REFLECT
by Kvadrat



An elegant twill weave upholstery fabric, Reflect is a testament to sustainable design without compromising on sophistication. Spun from post-consumer recycled polyester, it has a natural look and an exceptionally tactile feel while delivering impressive functional performance suitable for a wide range of environments.

PRICE CATEGORY	2
MANUFACTURER	Kvadrat
MATERIALS	100% Post-consumer Recycled Polyester
DURABILITY	100.000 Martindale
LIGHTFASTNESS	6 (ISO 1-8)
PILLING	4 (ISO 1-5)
C&M (BS5852-0/1)	No - Can be treated
CAL 117	Yes
CRIB 5 (BS5852-5)	No - Can be treated

0114	0174	0184	0194
0204	0344	0374	0694
0924	0944		

SAVANNA
by Kvadrat



Savanna combines intertwining yarns and materials to provide the unique sense of depth and richness that give it its distinct character. Shiny, matte and bouclé yarns create an elegant and visually compelling surface with a rich and irregular texture, revealing a captivating interplay of details when viewed up close.

PRICE CATEGORY
2
MANUFACTURER
Kvadrat
MATERIALS
34% Polyester
31% New Wool
26% Polyacrylic
4% Cotton
3% Nylon
2% Linen
DURABILITY
45.000 Martindale
LIGHTFASTNESS
6-7 (ISO 1-8)
PILLING
3 (ISO 1-5)
C&M (BS5852-0/1)
No - Can be treated
CAL 117
Yes
CRIB 5 (BS5852-5)
No - Can be treated



152



202

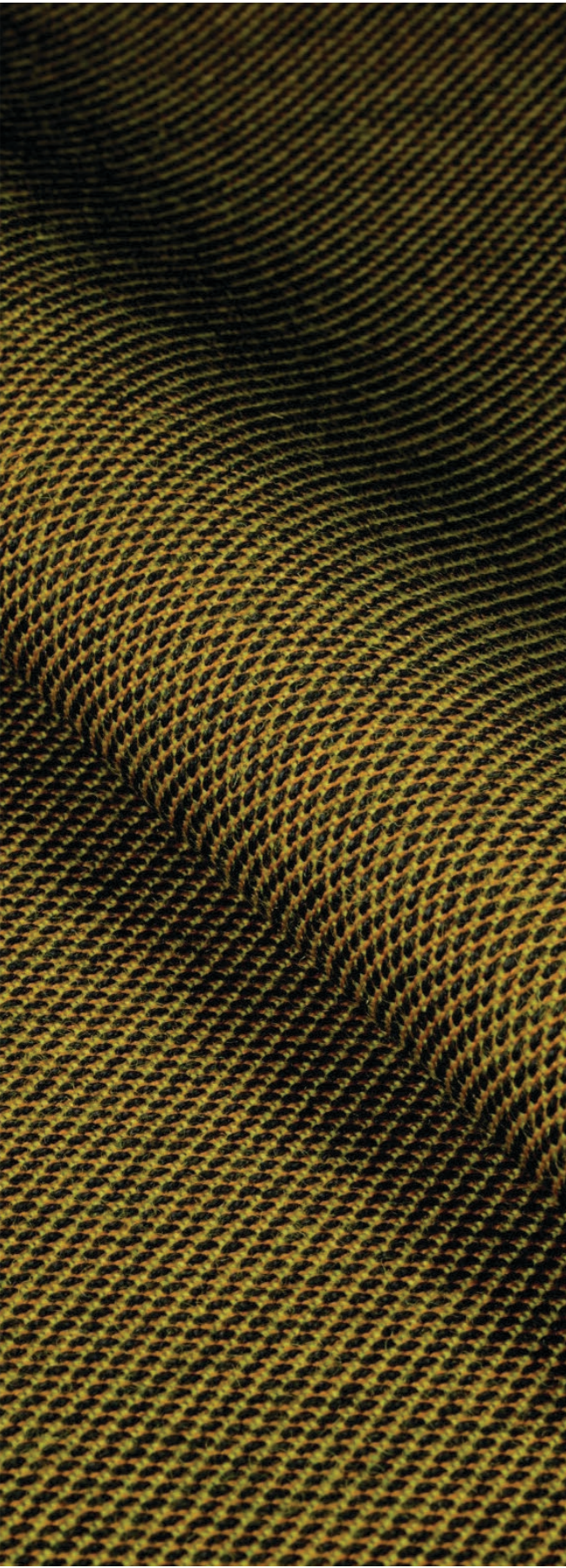


622



442

STEELCUT TRIO 3
by Kvadrat



A durable woollen upholstery fabric with a three-dimensional surface, Steelcut Trio 3 has an intricate weave yet maintains a simple and precise expression. Yarn-dyed and spun from three coloured threads, it has a distinctive and sophisticated pattern reminiscent of small pyramids.



205 253 383

PRICE CATEGORY	2
MANUFACTURER	Kvadrat
MATERIALS	90% New Wool (Worsted) 10% Nylon
DURABILITY	100.000 Martindale
LIGHTFASTNESS	6-7 (ISO 1-8)
PILLING	4 (ISO 1-5)
C&M (BS5852-0/1)	Yes
CAL 117	Yes
CRIB 5 (BS5852-5)	No

Textile Category 3



Skilfully crafted from a blend of yarns, Arctic has a luxurious texture that adds a touch of sophistication to any interior. Combining polyacrylic for durability, viscose for a soft and elegant feel and polyester for resilience, this bouclé fabric strikes the perfect balance between style and functionality.

PRICE CATEGORY	3
MANUFACTURER	Jab
MATERIALS	51% Polyacrylic 31% Viscose 18% Polyester
DURABILITY	30.000 Martindale
LIGHTFASTNESS	5 (ISO 1-8)
PILLING	4 (ISO 1-5)
C&M (BS5852-0/1)	No - Cannot be treated
CAL 117	No - Cannot be treated
CRIB 5 (BS5852-5)	No - Cannot be treated



1-1365-040

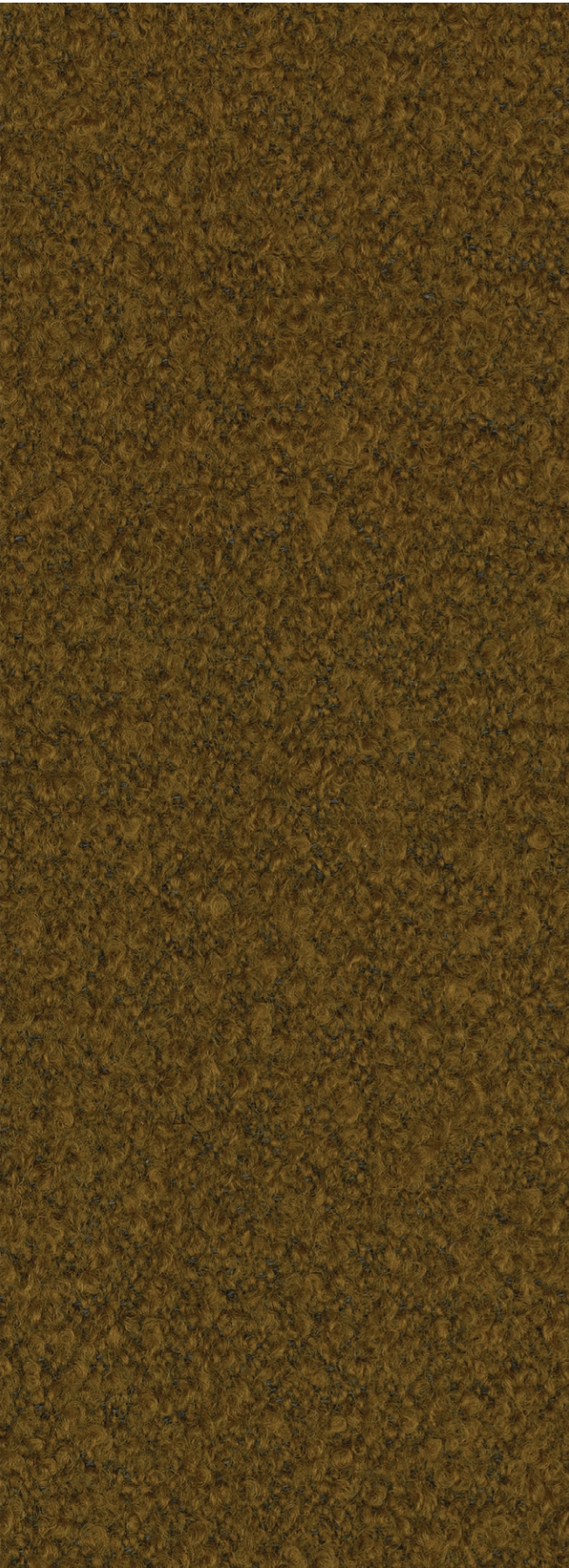


1-1365-070



1-1365-091

BARU
By Kvadrat



This ultra-soft new-wool bouclé offers a comforting volume thanks to wool fibre elasticity and finishing techniques. Resembling shorn fleece, with yarn dyed in warp and weft, it is soft and textural, with a slight shine from its acrylic blend.

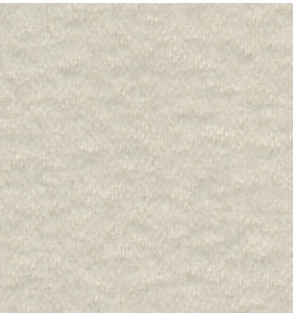
PRICE CATEGORY
3
MATERIALS
87% New Wool
10% Polyester
3% Nylon
MARTINDALE
65.000
LIGHTFASTNESS
4-5
PILLING
5



0950



0450



0200



0410



0330



0570

CIFRADO
By Kvadrat



A heavyweight and exceptionally durable chenille with the soft, comforting feel of a well-worn textile thanks to its unique tumble finish. Its characteristic texture is woven from a combination of chenille, cotton, linen and viscose, along with a high percentage of recycled yarns.



0451



0221

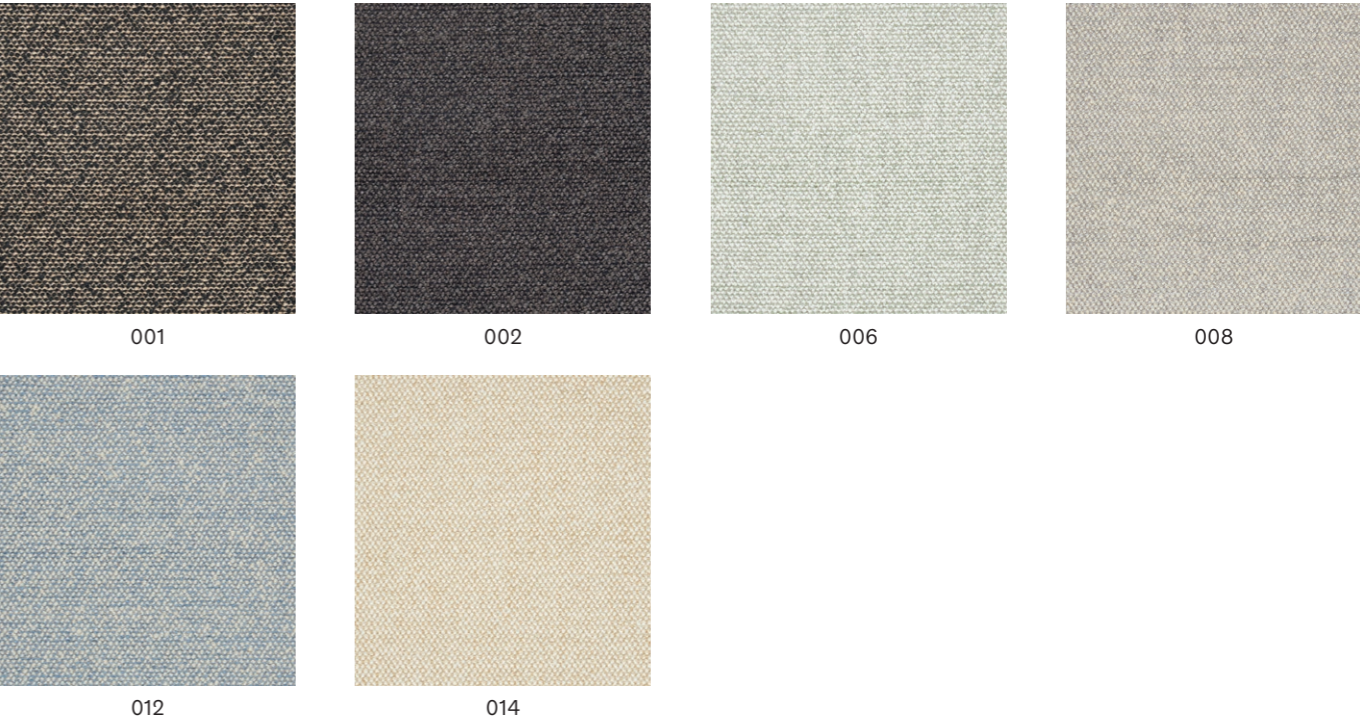
PRICE CATEGORY
3
MATERIALS
42% Recycled Polyester
27% Viscose
24% Recycled Cotton
7% Linen
MARTINDALE
30.000
LIGHTFASTNESS
5-6
PILLING
5

SAFIRE
by *Sahco*

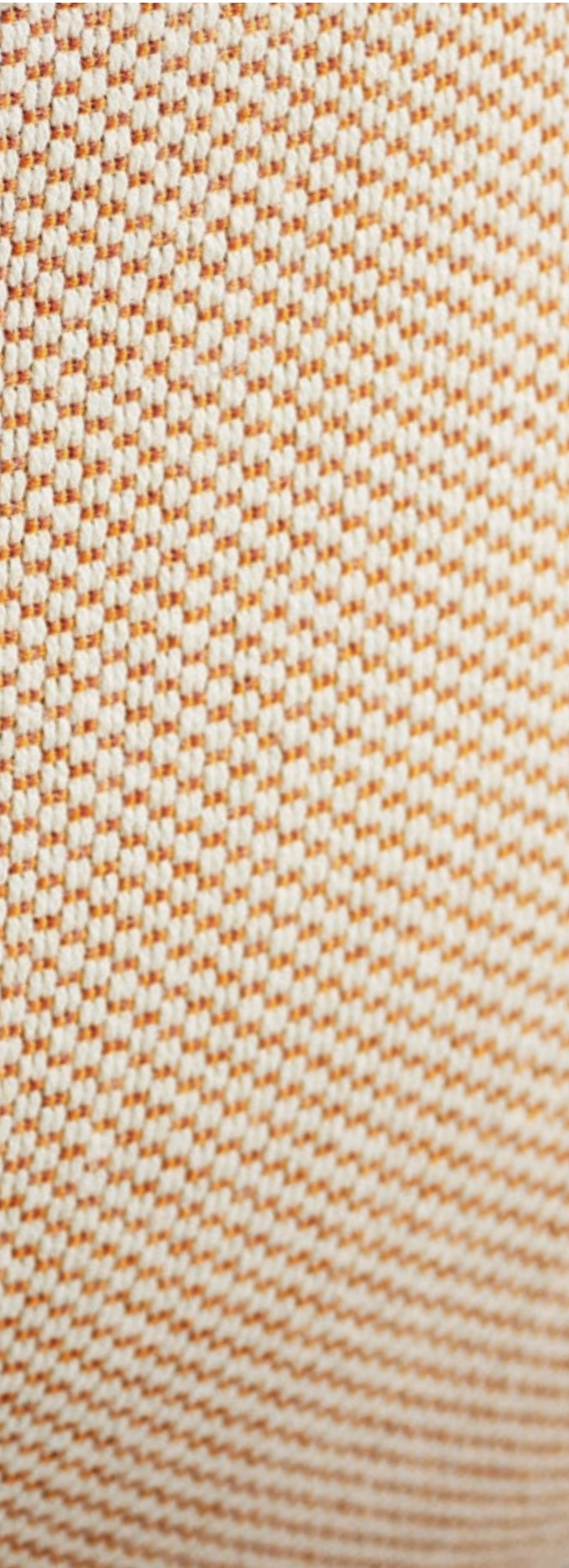


Safire has a subtle handwoven appearance that is both distinctive and dynamic. Soft and textured bouclé and chenille yarns not only enhance its woolly feel and soft allure but also impart a lively two-tone effect.

PRICE CATEGORY	3
MANUFACTURER	Sahco
MATERIALS	43% Viscose 17% Polyacrylic 15% New wool 9% Cotton 8% Linen 8% Polyester
DURABILITY	40.000 Martindale
LIGHTFASTNESS	5-6 (ISO 1-8)
PILLING	3 (ISO 1-5)
C&M (BS5852-0/1)	Yes
CAL 117	Yes
CRIB 5 (BS5852-5)	No - Cannot be treated

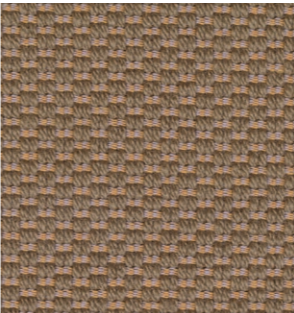


SERPENTINE
By Kvadrat

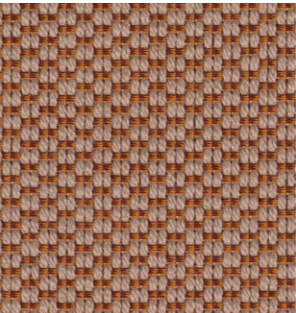


The voluminous woollen upholstery features dynamic colour interactions and distinctive tactility, inspired by traditional double Ikat weaves and Mexican colours. It is suitable for a wide range of commercial and residential applications due to its innovative construction and strong functional performance.

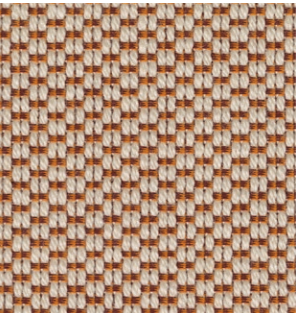
PRICE CATEGORY
3
MATERIALS
98% New Wool
2% Nylon
MARTINDALE
45.000
LIGHTFASTNESS
5-7
PILLING
3-4



0238



0438



0428

VIDAR 4
by Kvadrat



Distinguished by its tightly woven structure and nubby quality, the woollen Vidar 4 upholstery fabric has an inviting, comfortable texture that evokes images of a favourite knit. The weave’s soft surface offsets the deep, shadowy tones within, lending a multifaceted richness to each colour option.

PRICE CATEGORY
3
MANUFACTURER
Kvadrat
MATERIALS
94% New Wool
6% Nylon
DURABILITY
100.000 Martindale
LIGHTFASTNESS
7 (ISO 1-8)
PILLING
4 (ISO 1-5)
C&M (BS5852-0/1)
Yes
CAL 117
Yes
CRIB 5 (BS5852-5)
No - Cannot be treated

0146	0182	0323	0333
0526	0693	0723	0786
0956			



Inspired by Parisian couture, this bouclé upholstery textile showcases an elegant and irregular design. The inclusion of pearl-effect yarn in both warp and weft not only provides a luxurious feel but also gives a refined appearance with subtle tonal variations.



0001

PRICE CATEGORY
3
MANUFACTURER
Kvadrat
MATERIALS
65% Cotton
20% Polyacrylic
15% Polyester
DURABILITY
70.000 Martindale
LIGHTFASTNESS
6 (ISO 1-8)
PILLING
5 (ISO 1-5)
C&M (BS5852-0/1)
No - Cannot be treated
CAL 117
No
CRIB 5 (BS5852-5)
No - Cannot be treated

Textile Category 4

CABANON SOFT
by Designers Guild



Christian Lacroix’s timeless stripe is reimagined as upholstery on Cabanon Soft, a supremely soft velvet woven with a sumptuous cotton-rich pile for the perfect blend of sophistication, comfort and versatility.



FCL7029/04 (ROSEAU)

PRICE CATEGORY
4
MANUFACTURER
Designers Guild
MATERIALS
83% Cotton
17% Polyamide
DURABILITY
50.000 Martindale
LIGHTFASTNESS
4 (ISO 1-8)
PILLING
4-5 (ISO 1-5)
C&M (BS5852-0/1)
No
CAL 117
No
CRIB 5 (BS5852-5)
No

GRAND MOHAIR
by Danish Art Weaving



A premium choice for upholstery, thanks to its comfort, durability and aesthetic appeal, Grand Mohair is spun from the fleece of the Angora goat, revered for its luxurious natural appeal. Exceptionally soft to the touch and resistant to wear and tear, its inherent lustre creates a sophisticated appearance.



1103



2600



8205

PRICE CATEGORY
4
MANUFACTURER
Danish Art Weaving
MATERIALS
100% Mohair
DURABILITY
200.000 Wyzenbeek
LIGHTFASTNESS
4,5 (ISO 1-8)
PILLING
5 (ISO 1-5)
C&M (BS5852-0/1)
Yes
CAL 117
Yes
CRIB 5 (BS5852-5)
Yes

LUPO
by Dedar

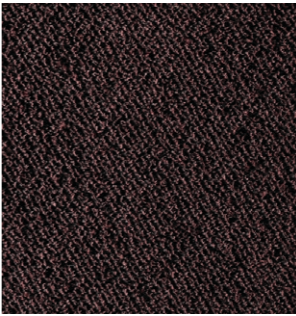


Characterised by its looped yarns, the flame-resistant Lupo bouclé is a dense and durable upholstery fabric with a high resistance to wear and tear. Its tactile surface adds visual interest and a soft quality to furniture, making it a comfortable choice for a range of applications.

PRICE CATEGORY	4
MANUFACTURER	Dedar
MATERIALS	74% Polyester Trevira CS 26% Polyester FR
DURABILITY	80.000 Martindale
LIGHTFASTNESS	4-5 (ISO 1-8)
C&M (BS5852-0/1)	Yes
CAL 117	Yes
CRIB 5 (BS5852-5)	No - Can be treated



T19028_004



T19028_005



T19028_008

AUDO UPHOLSTERY PROGRAMME

Leather

The Audo upholstery programme shows an overview of our textile and leather standard programme. All textile and leather collections are available in all colours.

Please note that the colour references are only intended as a guide. For further information please see manufacturer websites, or contact your local Audo sales representative.

Selection of textiles or leather outside of our upholstery programme, is subject to final testing and approval. Additional deliverytime may also occur.

SORENSENLEATHER.COM
NEVOTEX.COM
CA-MO.COM
SKANDILOCK.COM



LEATHER UPHOLSTERY SELECTION & FURNITURE

- TESTED AND APPROVED.
- NOT TESTED, BUT PRE-APPROVED BY SUPPLIER

Use table to determine the upholstery options available
for fabric-covered items.

PRICE CATEGORY 0	AFTERROOM	BRASILIA	CO CHAIR	HARBOUR CHAIR	HARBOUR LOUNGE CHAIR	INGEBORG	KNITTING CHAIR	MERKUR	MINGLE	MY OWN CHAIR	PASSAGE	READY	THE TIRED MAN	VILHELM	THE PENGUIN	ELIZABETH	THE SEAL
SIERRA, CAMO	•		•	•	•			•			◦	•					
PRICE CATEGORY 1																	
DAKAR, NEVOTEX	•	•	•	•	•	◦	◦	•		◦	◦	•	◦	◦	•	•	•
ENVY, SØRENSEN LEATHER	◦	◦	◦			◦	◦	◦		◦	◦	◦	◦	◦	◦	◦	◦
ULTRA, SØRENSEN LEATHER	•	•	•	•	•	◦	◦	•		◦	◦	•	◦	◦	◦	◦	◦
PRICE CATEGORY 2																	
DUNES, SØRENSEN LEATHER	•	•	•	•	◦	◦	◦	•		◦	◦	•	◦	◦	•	•	•
NUANCE, SØRENSEN LEATHER	•	◦	•	•	◦	◦	◦	◦		◦	◦	◦	◦	◦	◦	◦	◦
PRICE CATEGORY 3																	
SHEEPSKIN CURLY, SKANDILOCK						•			•	•			•	•			
SHEEPSKIN CURLY, NEVOTEX		•					◦										

Leather Category 0



A corrected leather with a printed surface, Sierra features a uniform appearance that requires minimal maintenance. Ideal for high-traffic areas, the long-lasting material is manufactured without environmentally harmful substances like PCP and CFC. Compliant with the REACH declaration, it adheres to all standards and limits for chrome VI.

PRICE CATEGORY	0
MANUFACTURER	Camo
MATERIALS	Corrected leather
THICKNESS	0.9 – 1.1 mm
MATERIALS	100 % Corrected Leather
LIGHTFASTNESS	≥4 (ISO 1-8)
TEARING STRENGTH	≥20 N
FLEXING RESISTANCE	50.000 cycles
C&M (BS5852-0/1)	Yes
CAL 117	Yes
CRIB 5 (BS5852-5)	No

			
1611 STONE	0441 ARMY	1058 OCEAN BLUE	1279 HAZE
			
1053 TOFFEE	1513 KELATO WHISKY	1015 DARK BROWN	1001 BLACK

Leather Category 1

DAKAR
by Nevotex

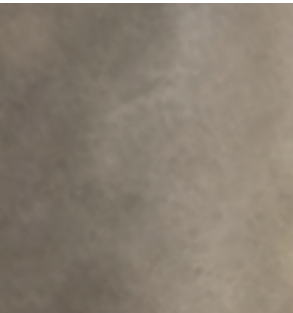


This chrome- and vacuum-tanned, full-grain aniline leather has a waxed surface for an exceptionally soft touch and a glossy finish that highlights its natural texture. Becoming more comfortable over time, it provides a supportive and cosy seating experience and develops a distinctive patina that adds character and uniqueness to each piece of furniture. Leather Standard by Oeko-Tex® certified.

PRICE CATEGORY
1
MANUFACTURER
Nevotex
MATERIALS
100 % Aniline Leather
LIGHTFASTNESS
3 (ISO 1-8)
TEARING STRENGTH
≥20 N
FLEXING RESISTANCE
30.000 cycles
CAL 117
Yes
CRIB 5 (BS5852-5)
No



0250 COGNAC



0311 ANTILOP



0329 BROWN



0842 BLACK

ENVY
by Sørensen Leather



Smooth to the touch and with a subtle surface sheen, Envy is an elegant aniline leather with subtle natural markings, artfully minimised through a special sanding process. The addition of a light, transparent wax further enhances surface protection, resulting in a delightful feel and a brilliant sense of depth. Leather Standard by Oeko-Tex® certified.

PRICE CATEGORY
1
MANUFACTURER
Sørensen Leather
MATERIALS
100 % Aniline Leather
LIGHTFASTNESS
>3 (ISO 1-8)
TEARING STRENGTH
≥20 N
FLEXING RESISTANCE
Non applicable
C&M (BS5852-0/1)
Yes
CAL 117
Yes
CRIB 5 (BS5852-5)
No



NOUGAT - 20322



OLIVE - 20324

ULTRA
by Sørensen Leather



A versatile protected leather ideal for everyday use, Ultra has a buffed, embossed texture for a tactile feel. Its uniform grain pattern across the entire hide ensures a consistent look, and a protective finish ensures Ultra is easy to maintain and retains its original appearance for an extended period, resisting signs of aging or fading.



BLACK - 41599



CHOCOLATE - 41589



BRANDY - 41574



CAMEL - 41571

PRICE CATEGORY
1

MANUFACTURER
Sørensen Leather

THICKNESS
0.9 – 1.1 mm

MATERIALS
100% Protected Leather

LIGHTFASTNESS
>5 (ISO 1-8)

TEARING STRENGTH
≥20 N

FLEXING RESISTANCE
50.000 cycles

CAL 117
Yes

CRIB 5 (BS5852-5)
No

Leather Category 2

DUNES
by Sørensen Leather



An exclusive aniline leather characterised by its natural, unrefined appearance, Dunes® achieves its luxurious velvety touch through sanding and a special leather oil application. Its matte finish exudes raw elegance, accentuated by unique natural markings that lend individuality to each hide. Patinating through usage and exposure to light, Dunes becomes shinier and smoother over time.



ANTHRAZITE - 21003



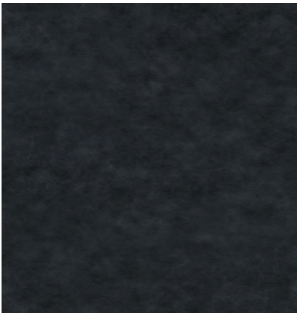
COGNAC - 21000

PRICE CATEGORY	2
MANUFACTURER	Sørensen Leather
THICKNESS	1.1 – 1.3 mm
CERTIFICATE	Nordic Swan Ecolabel
MATERIALS	100% Aniline Leather
LIGHTFASTNESS	3 (ISO 1-8)
TEARING STRENGTH	≥20 N
FLEXING RESISTANCE	20.000 cycles
CAL 117	Yes
CRIB 5 (BS5852-5)	No - Cannot be treated

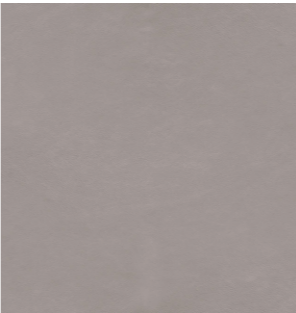
NUANCE
by Sørensen Leather



Nuance boasts a remarkable depth and dimension that radiates authenticity while offering durability. With its sumptuous, tactile feel, the protected leather is nuanced in both texture and tone, retaining the natural patterns and imperfections inherent to each hide. An invisible coating preserves the softness and protects against wear and tear.



BURNED GREY - 40783



LIGHT GREY - 40782

PRICE CATEGORY
2
MANUFACTURER
Sørensen Leather
MATERIALS
100% Protected Leather
THICKNESS
1.1 – 1.3 mm
MATERIALS
100% Aniline Leather
LIGHTFASTNESS
>5 (ISO 1-8)
TEARING STRENGTH
≥20 N
FLEXING RESISTANCE
50.000 cycles
CAL 117
Yes
CRIB 5 (BS5852-5)
No

Leather Category 3

SHEEPSKIN
by Skandilock



PRICE CATEGORY
3

MANUFACTURER
Skandilock

MATERIALS
Sheepskin

THICKNESS
17 mm



OFF WHITE



SAHARA



MOONLIGHT



HONEY



ESPRESSO



GREEN TEA

SHEEPSKIN
by Nevotex



PRICE CATEGORY
3

MANUFACTURER
Nevotex

MATERIALS
Sheepskin

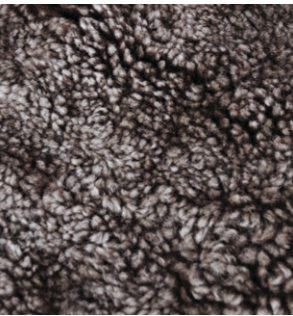
THICKNESS
17 – 21mm



NATURE



SAHARA



ROOT

NATURAL MARKINGS ON LEATHER

Individual and unique markings may appear on the leather and should not be considered as defects.



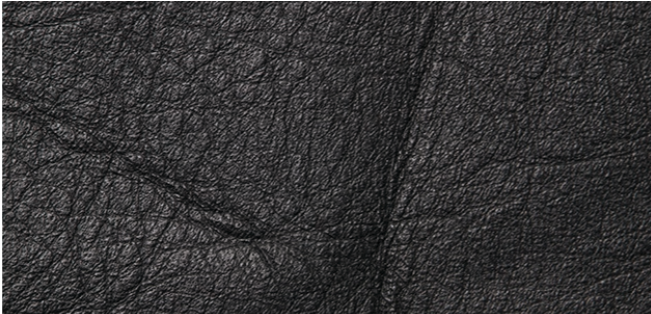
FAT WRINKLES



SCAR / INSECT BITES



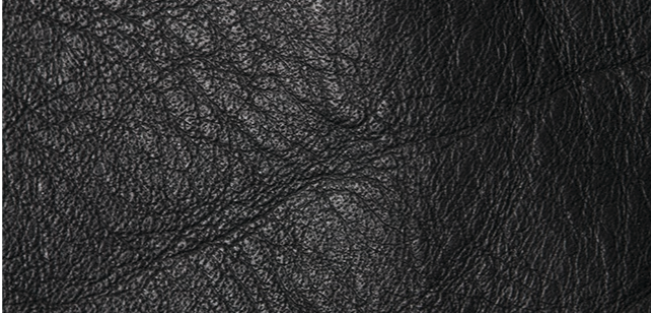
FOLDS



BUTCHING SCAR



HEALED SCARS



FAT WRINKLES

