

KARIMOKU CASE

TIMBER



OAK PURE OAK (Code: E) OAK SMOKED OAK (Code: G) OAK GRAIN MATTE BLACK (Code: M)

LEATHER

Leabelle



X353 (BITTER BROWN) X340 (CHOCOLAT BROWN) X448 (GREIGE) X343 (WHITE)

PAPER CORD

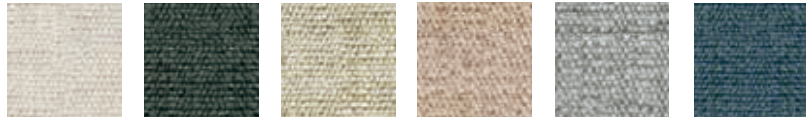


B932 (NATURAL) B933 (BLACK)

FABRIC

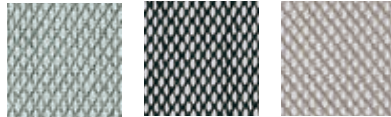
by Kvadrat

MAPLE
81%VI, 15%LI,
4%PE
* Do not wash



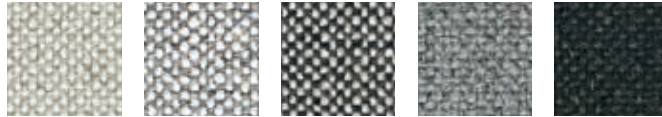
B917 (KVA MAP 102) B918 (KVA MAP 192) B909 (KVA MAP 222) B956 (KVA MAP 332) B910 (KVA MAP 722) B920 (KVA MAP 792)

STEELCUT TRIO 3
90%WO, 10%NY
* Do not wash



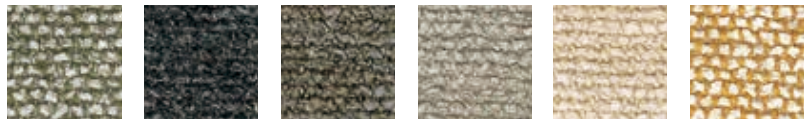
B784 (KVA STE 113) B785 (KVA STE 124) B786 (KVA STE 205)

HALLINGDAL 65
70%WO, 30%VI
* Do not wash



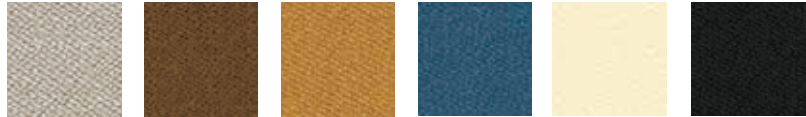
B922 (KVA HAL 110) B923 (KVA HAL 116) B924 (KVA HAL 126) B925 (KVA HAL 130) B926 (KVA HAL 180)

MOSS
52% CO, 22% VI,
14% PA, 6% LI
3% PE, 3% NY
* Do not wash
* Do not dry clean



B957 (KVA MOS 002) B958 (KVA MOS 008) B959 (KVA MOS 014) B960 (KVA MOS 016) B961 (KVA MOS 019) B962 (KVA MOS 021)

VIDAR 4
94%WO, 6%NY
* Do not wash
* Do not dry clean



B779 (KVA VID 222) B927 (KVA VID 353) B928 (KVA VID 472) B963 (KVA VID 0733) B964 (KVA VID 1511) B965 (KVA VID 1880)

WO(new wool)
CO(cotton)
VI(viscose)
PA(polyacrylic)
LI(linen)
PE(polyester)
NY(nylon)

CODA 2
90%WO, 10%NY
* Do not wash



B929 (KVA COD 103) B930 (KVA COD 242) B931 (KVA COD 422) B967 (KVA COD 762)