

Rugs in stock

**kvadrat**

## Rugs in stock

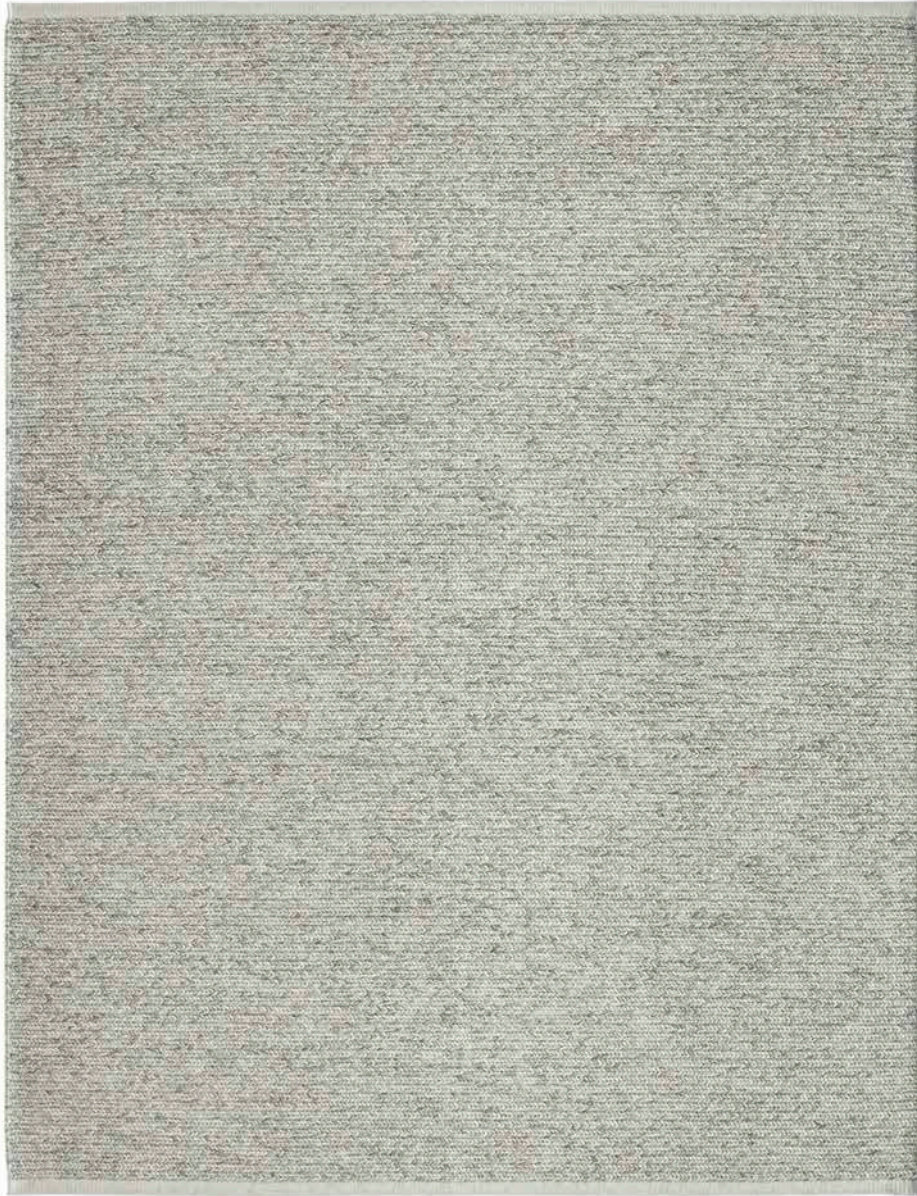
Kvadrat rugs are hand made and made to measure. Characterised by outstanding craftsmanship, meticulous attention to detail and tactile structures, they reinterpret classic techniques in a contemporary light.

Due to the hand made process and the intensive detailing involved in the making of our rugs, and because a lot of our hand crafted rugs are produced in India, production times can vary from time to time. As a quick ship service, we have therefore selected some of our bestselling rugs in a choice of colours and sizes to be available from stock.









Aram 2 0131

## Aram 2

**Design** Kinnasand

**Production method** Hand woven kelim made with Sumak technique

**Material** 100% pure New Zealand wool

**Height** 12 mm (½")

**Weight** 3300 g/m² (10.8 oz/sq ft)

**Sizes** 180 cm × 240 cm (5' 11" × 7' 10 ½"), 200 cm × 300 cm (6' 6 ½" × 9' 10"),  
250 cm × 350 cm (8' 2 ½" × 11' 6") including border

**Size of border** 3 cm (1 ¼")

**Size variation** +/- 3%

**Traffic** Suitable for medium to heavy residential and commercial use with exceptions of stairways, corridors or with the use of castors

**Flammability** EN 13501-1 Bfl-s1, ASTM D 2859/CPSC FF 1-70/FF 2-70, 16 CFR 1630, ASTM E 648 Class I, JIS L 1091 B

**Care** Professional cleaning

**Country of origin** India

### Notes

Slight colour differences may occur

Irregularities may occur as a result of the hand woven process

Rug underlay recommended



0111



0131









Bold 0112

## Bold

**Design** Hella Jongerius

**Production method** Hand woven

**Material** 100% pure New Zealand wool

**Height** 12 mm (½")

**Weight** 3800 g/m² (12.5 oz/sq ft)

**Sizes** 180 cm × 240 cm (5' 11" × 7' 10 ½"), 200 cm × 300 cm (6' 6 ½" × 9' 10"),  
250 cm × 350 cm (8' 2 ½" × 11' 6")

**Size variation** +/- 3%

**Traffic** Suitable for moderate to medium residential and commercial use with exceptions of stairways, corridors or with the use of castors

**Flammability** EN 13501-1 Bfl-s1, ASTM D 2859/CPSC FF 1-70/FF 2-70, 16 CFR 1630

**Care** Professional cleaning

**Country of origin** India

### Notes

Slight colour differences may occur

Irregularities will occur as a result of the hand woven process

Fringe length of 7 cm (2 ¾") at top and bottom of rug

Rug sizes exclude fringes

Rug underlay recommended



0112







## Braid 2

**Design** Karin An Rijlaarsdam

**Production method** Stitching

**Material** 88% recycled polyester, 12% polyester

**Height** 8 mm (¼")

**Weight** 2700 g/m<sup>2</sup> (8.8 oz/sq ft)

**Sizes** 180 cm × 240 cm (5' 11" × 7' 10 ½"), 200 cm × 300 cm (6' 6 ½" × 9' 10"),  
250 cm × 350 cm (8' 2 ½" × 11' 6")

**Size of border** 1 cm (½")

**Size variation** +/- 3%

**Traffic** Suitable for heavy residential and commercial use and the use of castors with exceptions of stairways and corridors

**Flammability** EN 13501-1 Cfl-s1, ASTM D 2859/CPSC FF 1-70/FF 2-70, 16 CFR 1630, ASTM E 648 Class I, ASTM E 662

**Care** Professional cleaning

**Country of origin** India

### Notes

Slight colour differences may occur

Irregularities may occur as a result of the hand crafted process

Border is refined with a 10 cm (4") wrapping detail

EN 985 castor chair index 3.8 / intensive use

Rug underlay recommended

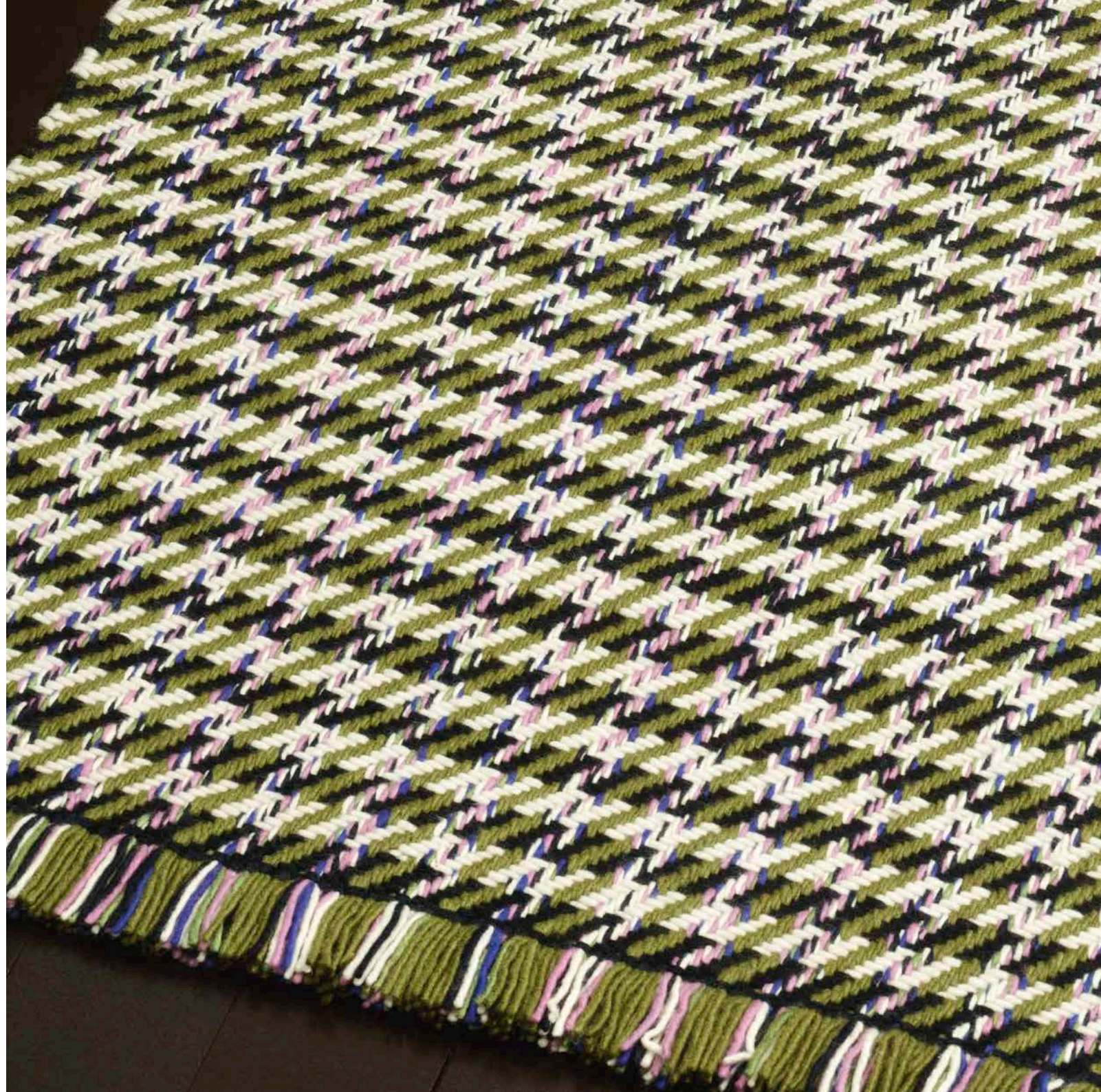


0231



0191







# Dashes

**Design** Daniel Costa

**Production method** Hand woven

**Material** 100% pure New Zealand wool

**Height** 10 mm (½")

**Weight** 3000 g/m<sup>2</sup> (9.8 oz/sq ft)

**Sizes** 180 cm × 240 cm (5' 11" × 7' 10 ½"), 200 cm × 300 cm (6' 6 ½" × 9' 10"),  
250 cm × 350 cm (8' 2 ½" × 11' 6")

**Size variation** +/- 5%

**Traffic** Suitable for medium to heavy residential and commercial use with exceptions  
of stairways, corridors or with the use of castors

**Flammability** EN 13501-1 Bfl-s1, ASTM D 2859/CPSC FF 1-70/FF 2-70, 16 CFR 1630,  
ASTM E 648 Class I, ASTM E 662

**Care** Professional cleaning

**Country of origin** India

## Notes

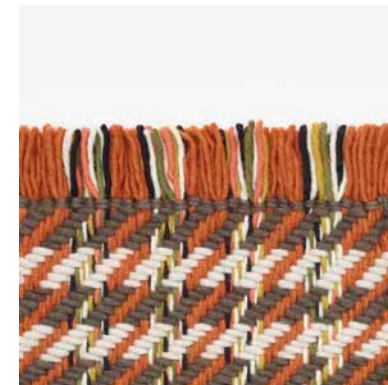
Slight colour differences may occur

Irregularities may occur as a result of the hand woven process

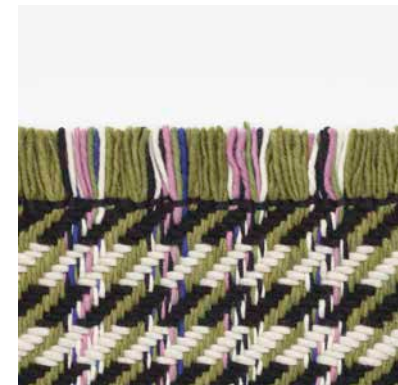
Fringe length of 7 cm (2 ¾") at top and bottom of rug

Rug sizes exclude fringes

Rug underlay recommended



0541



0931





Duotone



# Duotone

**Design** Hella Jongerius

**Production method** Hand woven

**Material** 100% pure New Zealand wool

**Height** 5 mm (¼")

**Weight** 1600 g/m<sup>2</sup> (5.2 oz/sq ft)

**Sizes** 180 cm × 240 cm (5' 11" × 7' 10 ½"), 200 cm × 300 cm (6' 6 ½" × 9' 10"),  
250 cm × 350 cm (8' 2 ½" × 11' 6")

**Size variation** +/- 3%

**Traffic** Suitable for medium to heavy residential and commercial use with exceptions  
of stairways, corridors or with the use of castors

**Flammability** EN 13501-1 Bfl-s1, ASTM D 2859/CPSC FF 1-70/FF 2-70, 16 CFR 1630

**Care** Professional cleaning

**Country of origin** India

## Notes

Slight colour differences may occur

Irregularities will occur as a result of the hand woven process

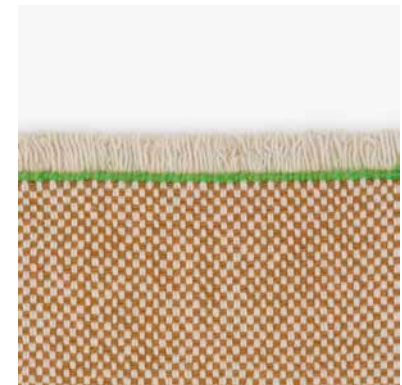
Fringe length of 7 cm (2 ¾") at top and bottom of rug

Rug sizes exclude fringes

Rug underlay recommended



0721



0511

Duotone 0511









Jute and Wool 0281

## Jute and Wool

**Design** Kinnasand

**Production method** Hand woven

**Material** 68% jute, 32% pure New Zealand wool

**Height** 11 mm (½")

**Weight** 2700 g/m² (8.8 oz/sq ft)

**Sizes** 180 cm × 240 cm (5' 11" × 7' 10 ½"), 200 cm × 300 cm (6' 6 ½" × 9' 10"),  
250 cm × 350 cm (8' 2 ½" × 11' 6")

**Size variation** +/- 5%

**Traffic** Suitable for light to moderate residential and commercial use  
with exceptions of stairways, corridors or with the use of castors

**Flammability** EN 13501-1 Cfl-s1, ASTM D 2859/CPSC FF 1-70/FF 2-70, 16 CFR 1630

**Care** Professional cleaning

**Country of origin** India

### Notes

Slight colour differences will occur, using natural coloured jute and wool

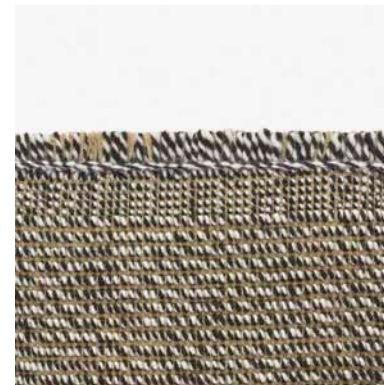
Jute has a characteristic, natural scent which will disappear over time

Irregularities may occur as a result of the hand woven process

Woven border of 6 cm (2 ¼") and fringe length of 3 cm (1 ¼") at top and bottom

Rug sizes exclude fringes

Rug underlay recommended



0191



0281







# Kanon

**Design** Kinnasand

**Production method** Hand knotted, 21,000 Persian knots/m<sup>2</sup> and hand woven

**Material** 68% cotton (base), 32% pure New Zealand wool

**Height** 5 mm (¼")

**Weight** 2000 g/m<sup>2</sup> (6.5 oz/sq ft)

**Sizes** 180 cm × 240 cm (5' 11" × 7' 10 ½"), 200 cm × 300 cm (6' 6 ½" × 9' 10"),  
250 cm × 350 cm (8' 2 ½" × 11' 6")

**Size of border** 3 cm (1 ¼")

**Size variation** +/- 3%

**Traffic** Suitable for light to moderate residential and commercial use with exceptions  
of stairways, corridors or with the use of castors

**Flammability** EN 13501-1 Cfl-s1, ASTM D 2859/CPSC FF 1-70/FF 2-70, 16 CFR 1630,  
ASTM E 648 Class I, ASTM E 662, JIS L 1091 B

**Care** Professional cleaning

**Country of origin** India

## Notes

Slight colour differences may occur

Irregularities may occur as a result of the hand knotted and hand woven process

Irregular shearing of the pile

Rug underlay recommended



Kanon 0003



0003



0023









Lavo 2 0033

## Lavo 2

**Design** Kinnasand

**Production method** Hand knotted, 20,000 Persian knots/m<sup>2</sup>

**Material** 80% pure new Sardinian wool, 20% pure new wool

**Height** 11 mm (½")

**Weight** 2600 g/m<sup>2</sup> (8.5 oz/sq ft)

**Sizes** 180 cm × 240 cm (5' 11" × 7' 10 ½"), 200 cm × 300 cm (6' 6 ½" × 9' 10"),

250 cm × 350 cm (8' 2 ½" × 11' 6")

**Size of border** 2 cm (¾")

**Size variation** +/- 3%

**Traffic** Suitable for light to moderate residential use with exceptions of stairways, corridors or with the use of castors

**Flammability** EN 13501-1 Cfl-s1, ASTM D 2859/CPSC FF 1-70/FF 2-70, 16 CFR 1630, ASTM E 648 Class I, ASTM E 662

**Care** Professional cleaning

**Country of origin** India

### Notes

Slight colour differences will occur

Characteristic colour shading is obtained by washing and yarn dying method

Irregularities may occur as a result of the hand knotted process

Abrash character may occur, created by subtle dyeing and a special wash

Hand brushed woven border

Rug underlay recommended



0011



0033





Yield Dot Naturally Coloured Fringes



## Yield Dot Naturally Coloured Fringes

**Design** Kinnasand

**Production method** Hand woven

**Material** 100% pure new wool

**Height** 6 mm (¼")

**Weight** 1500 g/m<sup>2</sup> (4.9 oz/sq ft)

**Sizes** 180 cm × 240 cm (5' 11" × 7' 10 ½"), 200 cm × 300 cm (6' 6 ½" × 9' 10"),  
250 cm × 350 cm (8' 2 ½" × 11' 6")

**Length of fringes** 3 cm (1 ¼")

**Size variation** +/- 3%

**Traffic** Suitable for moderate to medium residential use with exceptions of stairways, corridors or with the use of castors

**Flammability** EN 13501-1 Bfl-s1, ASTM D 2859/CPSC FF 1-70/FF 2-70, 16 CFR 1630

**Care** Professional cleaning

**Country of origin** India

### Notes

Colour differences will occur due to the high content of naturally coloured wool

Colour 0115 consists of naturally coloured wool

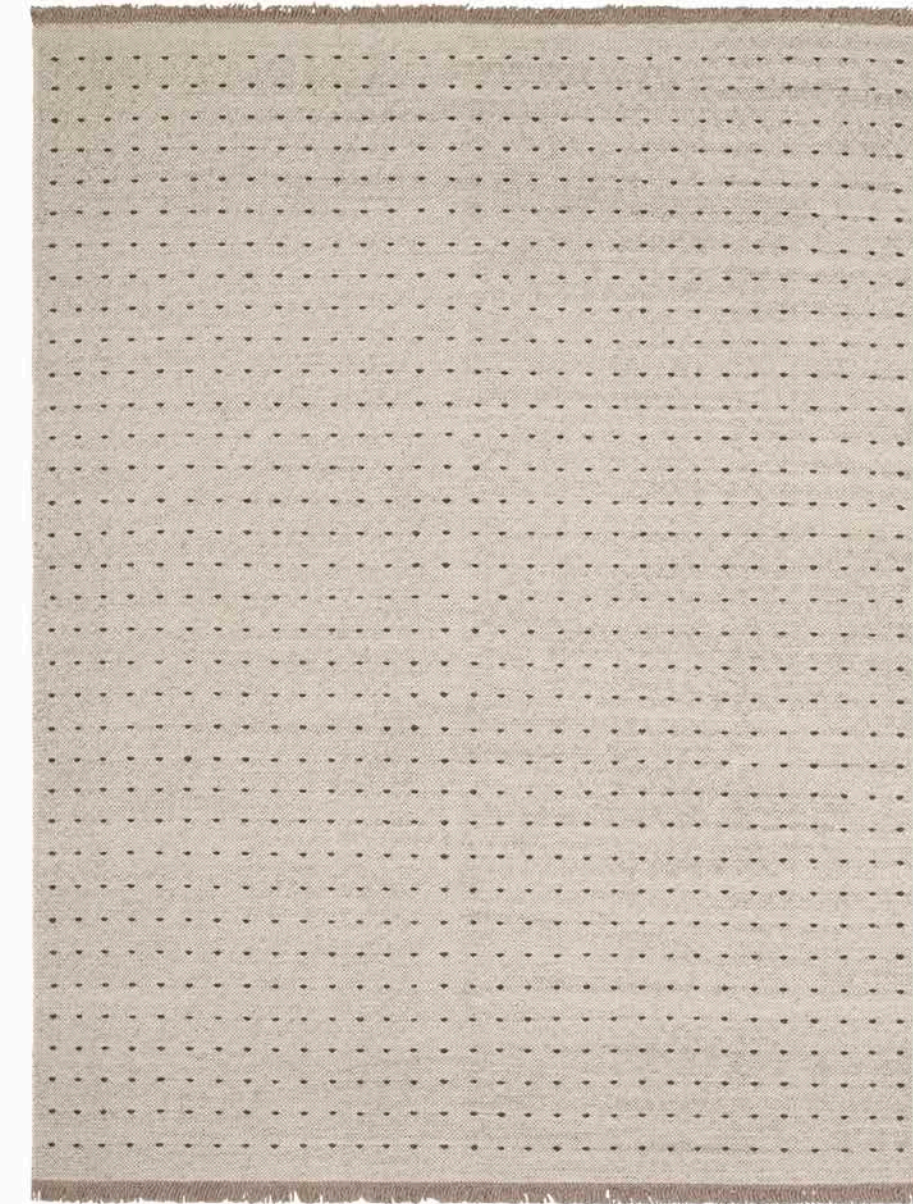
Irregularities or waviness may occur as a result of the hand woven process

Rug sizes exclude fringes

Rug underlay recommended



0115



Yield Dot Naturally Coloured Fringes 0115





Yield Melange Naturally Coloured Fringes



## Yield Melange Naturally Coloured Fringes

**Design** Kinnasand

**Production method** Hand woven

**Material** 100% pure new wool

**Height** 6 mm (¼")

**Weight** 1400 g/m<sup>2</sup> (4.6 oz/sq ft)

**Sizes** 180 cm × 240 cm (5' 11" × 7' 10 ½"), 200 cm × 300 cm (6' 6 ½" × 9' 10"),  
250 cm × 350 cm (8' 2 ½" × 11' 6")

**Length of fringes** 3 cm (1 ¼")

**Size variation** +/- 3%

**Traffic** Suitable for medium to heavy residential use with exceptions of stairways, corridors or with the use of castors. Suitable for moderate to medium commercial use with exceptions of stairways, corridors or with the use of castors

**Flammability** EN 13501-1 Bfl-s1, ASTM D 2859/CPSC FF 1-70/FF 2-70, 16 CFR 1630

**Care** Professional cleaning

**Country of origin** India

### Notes

Colour differences will occur due to the high content of naturally coloured wool

Colour 0152 consists of naturally coloured wool

Irregularities or waviness may occur as a result of the hand woven process

Rug sizes exclude fringes

Rug underlay recommended



0152



Yield Melange Naturally Coloured Fringes 0152





Yield Naturally Coloured Fringes 0191

## Yield Naturally Coloured Fringes

**Design** Kinnasand

**Production method** Hand woven

**Material** 100% pure new wool

**Height** 6 mm (¼")

**Weight** 1400 g/m<sup>2</sup> (4.6 oz/sq ft)

**Sizes** 180 cm × 240 cm (5' 11" × 7' 10 ½"), 200 cm × 300 cm (6' 6 ½" × 9' 10"),

250 cm × 350 cm (8' 2 ½" × 11' 6")

**Length of fringes** 3 cm (1 ¼")

**Size variation** +/- 3%

**Traffic** Suitable for medium to heavy residential use with exceptions of stairways, corridors or with the use of castors. Suitable for moderate to medium commercial use with exceptions of stairways, corridors or with the use of castors

**Flammability** EN 13501-1 Bfl-s1, ASTM D 2859/CPSC FF 1-70/FF 2-70, 16 CFR 1630

**Care** Professional cleaning

**Country of origin** India

### Notes

Colour differences will occur due to the high content of naturally coloured wool

Irregularities or waviness may occur as a result of the hand woven process

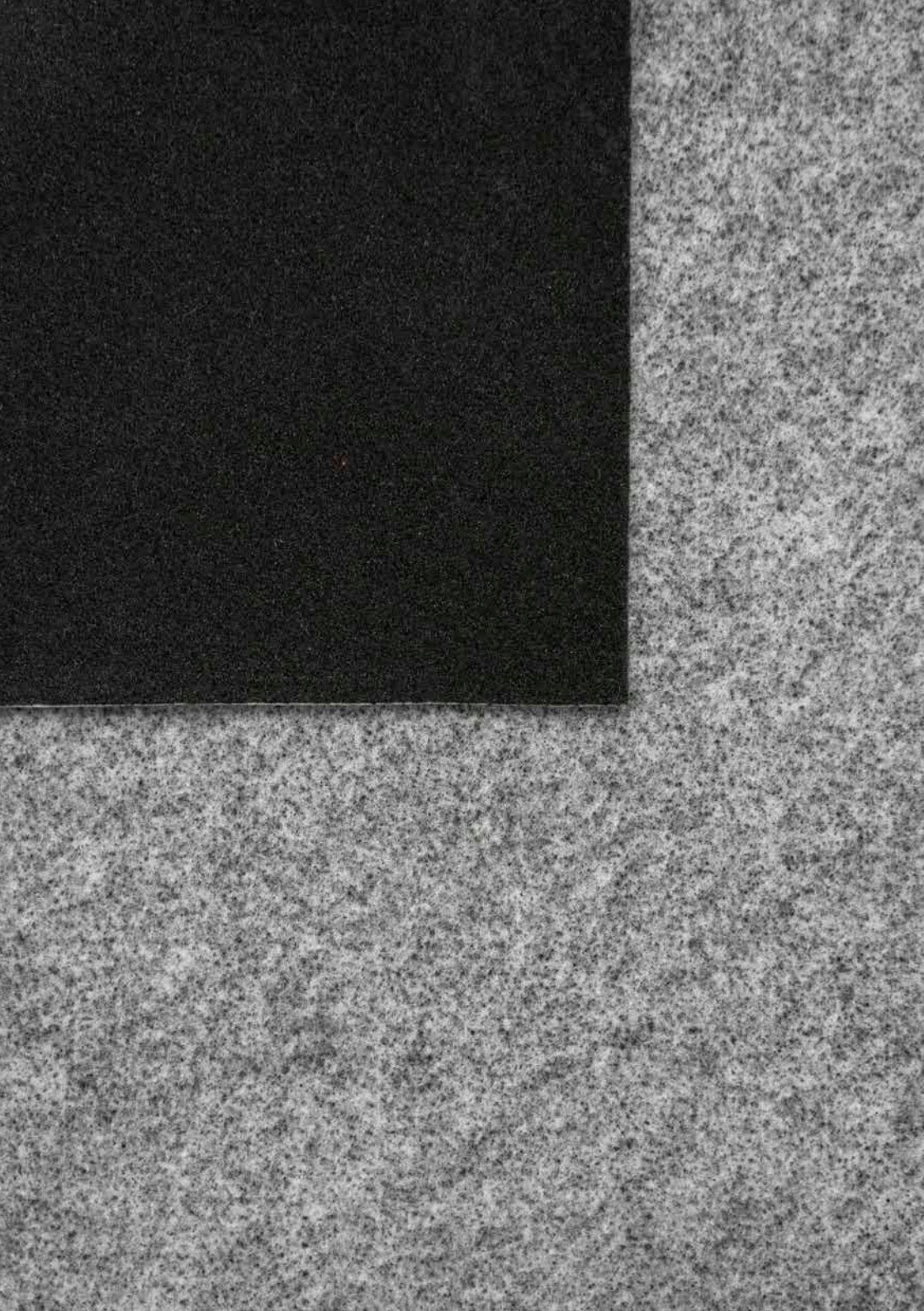
Rug sizes exclude fringes

Rug underlay recommended



0191





## Rug underlay

**Material** 85% recycled polyester, 15% polyester fleece with acrylic based adhesive

**Height** 2.5 mm (1/10")

**Weight** 240 g/m<sup>2</sup> (0.8 oz/sq ft)

**Width** 240 cm and 300 cm (7' 10 1/2" and 9' 10")

**Care** Hand wash 30°C (86°F), do not wring or tumble dry, do not iron

**Country of origin** The Netherlands

### Notes

Good, solid base for any rug, accentuating its natural beauty and comfort

Suitable for residential and commercial use

Levels out any small irregularities in the floor

Install with grey side facing the floor, black side facing the rug

Make sure your floor is completely clean and dry before installing

Ventilate from time to time

Should be sized 50 mm (2") smaller than your rug

Suitable for heated floors

Leaves no residue

Cutting service available for a fee

Available in rolls of 50 m (54.7 yd)



